

BINGARA GORGE

THREE BIRDS DREAM HOME WITH THREE BIRDS HAMPTONS FACADE



ARTIST'S IMPRESSION

RIDGELINE PRECINCT – LOT 35

4  2.5  2 

LOT SIZE

1717.0m²

LAND PRICE

\$1,350,000

HOUSE PRICE

\$1,037,600

PACKAGE PRICE

\$2,387,600

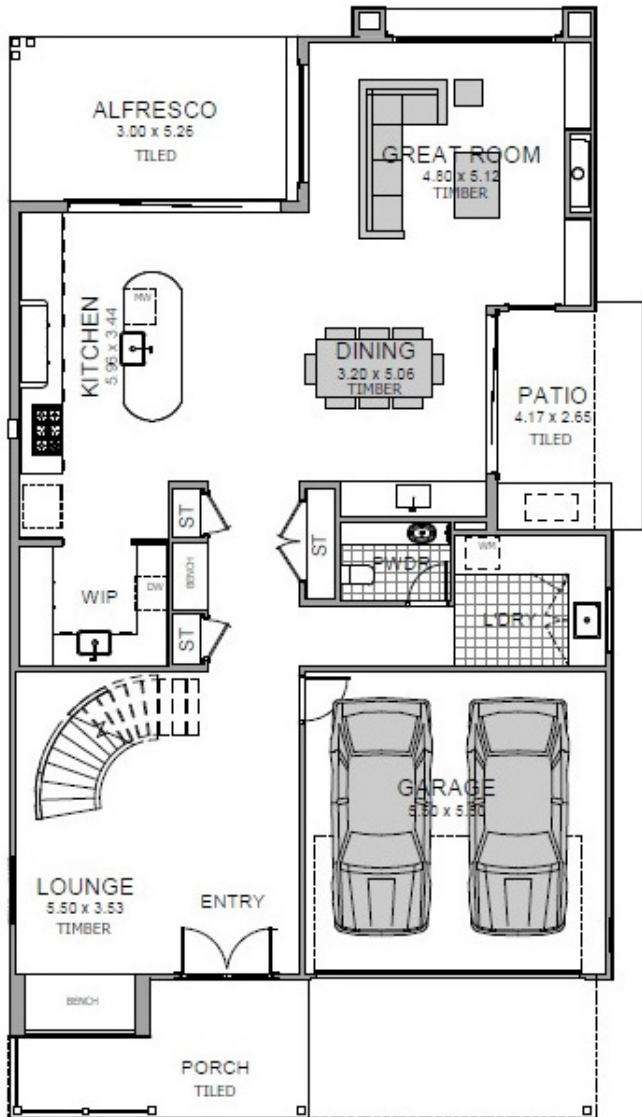
INCLUSIONS:

- Dream Home designed by The Three Birds
- Inclusions hand selected by The Three Birds
- Stylish Curved Staircase
- Woodcut engineered Oak flooring to living areas
- Luxury Butler's Pantry
- Caesarstone to benchtop and splashback and kitchen
- Mudroom with daybed
- Chic Alfresco with Servery window and French pattern tiling
- Bespoke curved bathroom wall with luxury fittings
- Soaring ceilings to living areas flooded with nature light

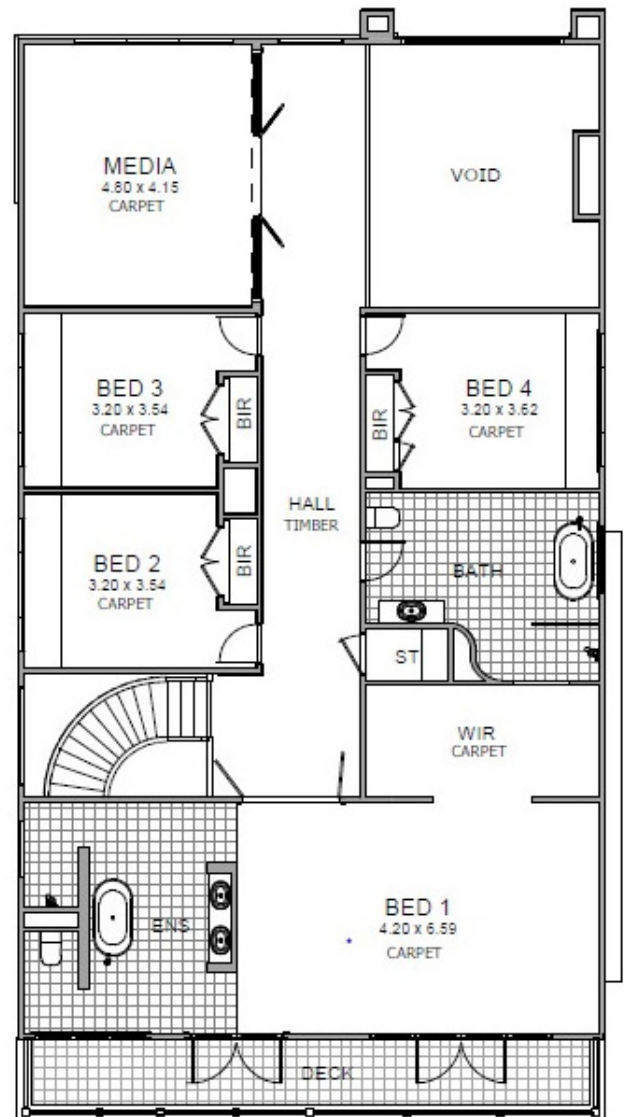


**RAWSON
HOMES**
— EST 1978 —

GROUND FLOOR



FIRST FLOOR



Disclaimer: Site costs are fixed for all lots with up to 1m of fall across the site and soil classification for 'M' class slabs and does not cover costs incurred if rock is found on any lots. House & land packages are subject to availability, developer's design review panel & statutory approval. Price will be determined upon tender request for individual lots and may vary due to site conditions, bushfire & acoustic requirements and statutory authority requirements. Packages may change as a result of variations to the inclusions or specifications required by the purchaser. Packages do not include stamp duty, legal fees or any other costs incurred associated to the purchase. Whilst every effort is made to provide accurate information, images are for illustrative purposes and intended to provide a visual guide only. All house & land packages are subject to developer approval. Rawson gives no warranty in relation to the lot, the estates, the area, future facilities or developments in or surrounding estates it packages homes in. Rawson Homes is responsible for the building contract for the construction of the home only. Customers will be required to enter into a separate contract for the purchase of the land component of the package with the relevant developer and must rely on their own enquiries about the lot. Where Rawson Homes is not a related entity to the land developer, purchasers will be referred to the developer's agent to enquire and negotiate the purchase of the land. Refer to individual contracts for final details and full terms and conditions. Rawson Homes reserves the right to withdraw any house & land package at any time or if the land or home becomes unavailable or is sold. Details are correct at time of printing and are subject to change without notice or obligation.