

# BINGARA GORGE

## THE CORDOBA WITH CUSTOM FACADE



Depicted Façade images and Plans may show materials that are not included in the price, enquire with builder for more information.

ARTIST'S IMPRESSION

### RIDGELINE PRECINCT – LOT 12

4  3  2 

#### LOT SIZE

571.1m<sup>2</sup>

#### LAND PRICE

\$725,000

#### HOUSE PRICE

\$742,543

#### PACKAGE PRICE

\$1,467,543

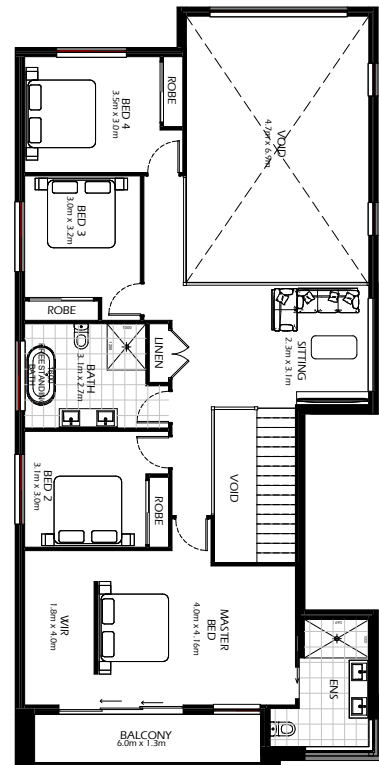
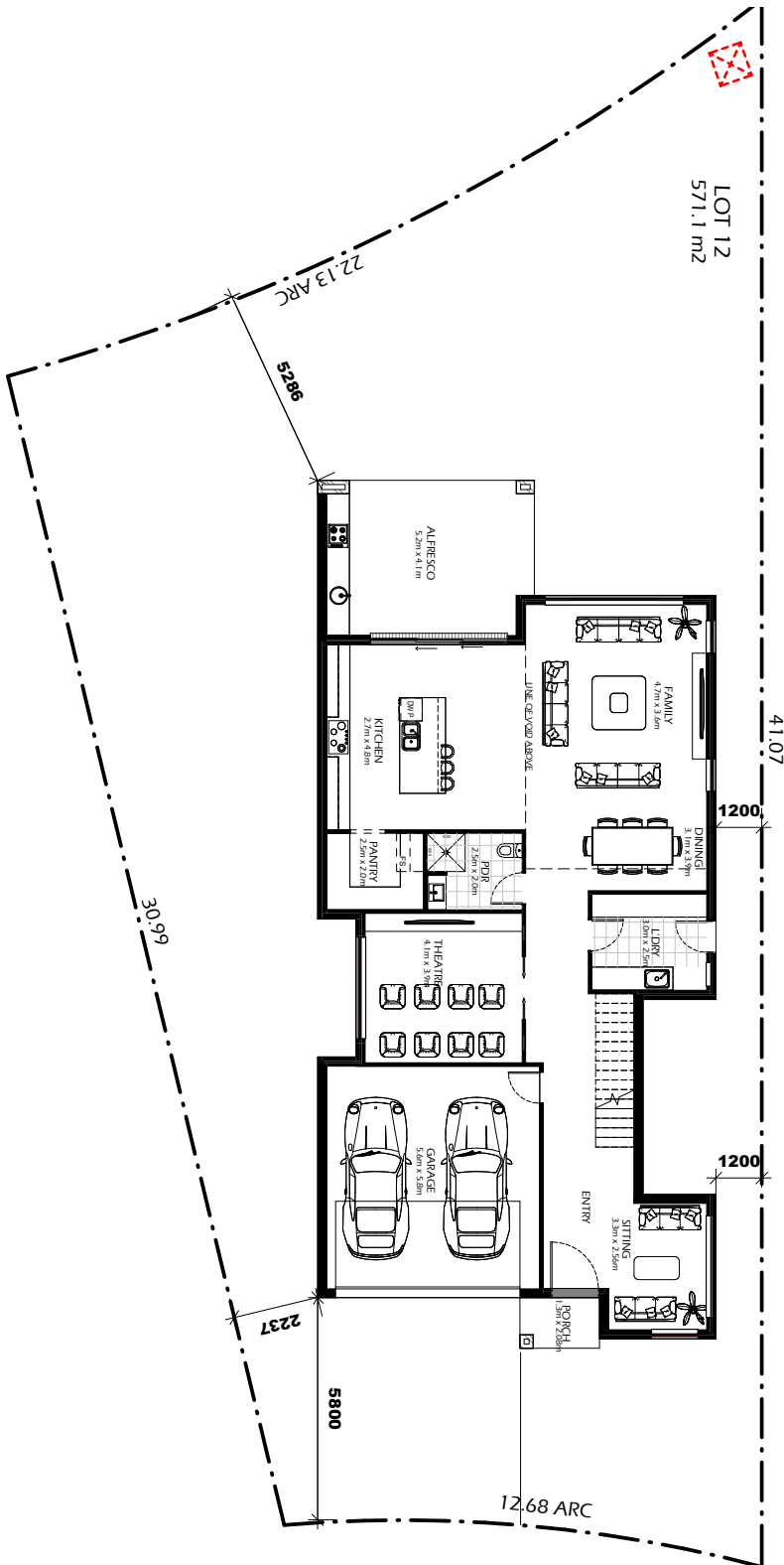
#### KRAKOW INCLUSIONS:

- Site Costs Included
- 2700mm Ground Ceiling Height and 2590mm First Floor Ceiling Height
- 2340mm High Internal Doors
- Full Height Tiles to all Wet Areas
- Hebel and Render to External Walls
- Colorbond Roof
- Downlights Throughout
- Laminate Timber Flooring Throughout
- Pantry Cabinetry
- 40mm Stone to all Benchtops in Home
- Laundry Cabinetry with Stone Benchtop
- Frameless Showerscreens
- Smeg Appliances
- BBQ Cabinetry with Sink and Cooktop
- Ducted Air Conditioning
- Unlimited Changes to Design and Inclusions
- Customer to get first hand experience with Interior/ Exterior designer for any advice throughout build
- Direct Contact with Actual Builder throughout Build



## GROUND FLOOR

## FIRST FLOOR



TERMS & CONDITIONS: \*NOTE: Pricing may vary due to actual land availability. House and Land Packages are subject to developers design review panel, council final approval and Krakow Constructions Procedure of Purchase. All prices are GST inclusive. Any Variations made to the home package may incur a cost adjustment if the prices differ from the current inclusions. Start date is subject to client, developer and council meeting time frames including but not limited to, land registration, amount of client variations, developer/council approval, acceptance of tender and contract within 14 days respectively. Prices are subject to developer, council and statutory requirements, location and condition of services. Package provided is based on Krakow Constructions preliminary/preferred siting and preliminary developer land information currently available. Variations to land size, location of services - including but not limited to sewer/stormwater locations, drainage grates, Telstra pits, trees, butterfly drains, driveway crossover, pram ramps, electrical/other easements or Section 88B instrument, may necessitate floor plan or siting amendments. Builders Licence Number 328796C.