



7% LEASE
BACK FOR
12 MONTHS

85 FAIRWAY DRIVE

BINGARA GORGE

 creationhomes



6 2.5 2

\$2,350,000

TURNKEY QUALITY INCLUSIONS:

Land Size: 561.6m² House Size: 378.49m²

Inspired by modern country living, this expertly crafted 6-bedroom family home offers exceptional finishes, spacious living areas and seamless indoor/outdoor entertaining.

As you step into this meticulously detailed home, you will immediately notice the grandeur and elegance this property exudes. Upon entry you will be greeted by a light-filled foyer with soaring ceilings and a cosy formal lounge area with fireplace perfect for intimate gatherings.

Moving further into the home you will find a spacious media room overlooking the lap pool, and open-plan dining and living areas with fireplace, leading out to the decked outdoor entertaining area. An entertainer's delight, 85 Fairway Drive Wilton features a lap pool with water feature, outdoor shower, covered alfresco with louvre operable roof and picture – perfect views across the evergreen Bingara Gorge 18-hole golf course.

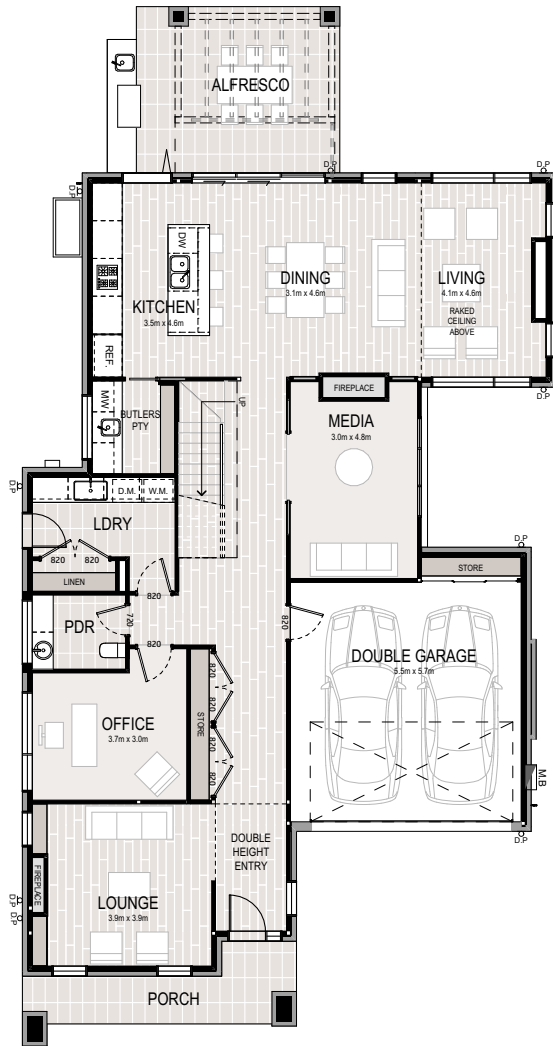
At the heart of the home, you will find the chef's kitchen with SMEG cooking appliances including 900mm stainless steel gas cooktop, concealed undermount rangehood and built-in oven. The kitchen also features stone benchtops and island bench, semi-integrated SMEG dishwasher and SMEG microwave, along with a fully integrated Fisher & Paykel fridge and butler's pantry for added convenience and storage.

Designed for functional family living, this large family home offers a sixth bedroom or home office downstairs, plus a powder room and an internal laundry with exceptional built-in storage. Upstairs features 5 generously planned bedrooms all with built-in storage, along with a comfortable rumpus area and luxurious main bathroom.

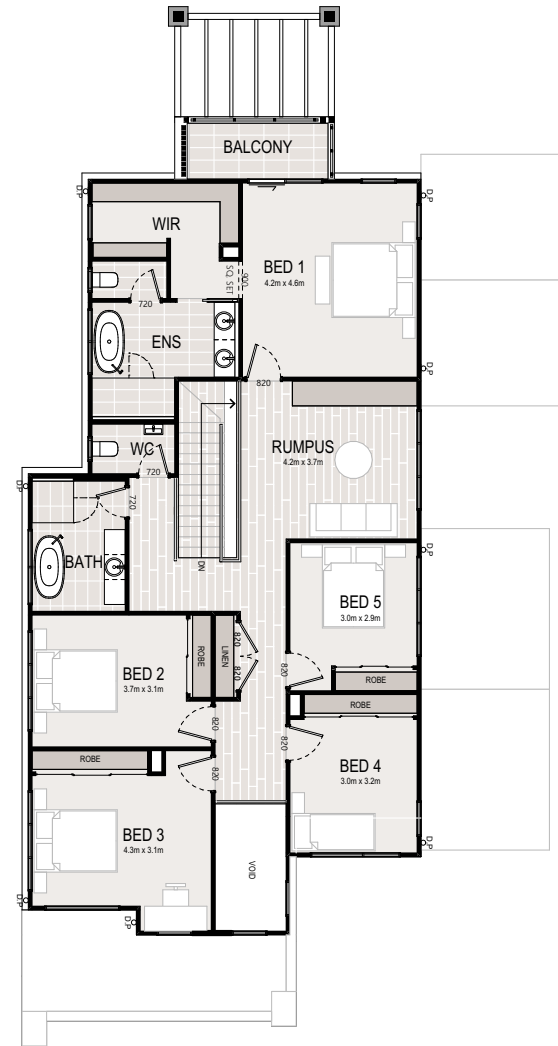
Take in the expansive, picturesque views of the golf course from the balcony of the master suite. Your own private oasis, unwind in comfort and style in the spacious master suite with walk-in wardrobe and beautifully finished ensuite with shower, free-standing bathtub and 'his' and 'hers' basin sinks.

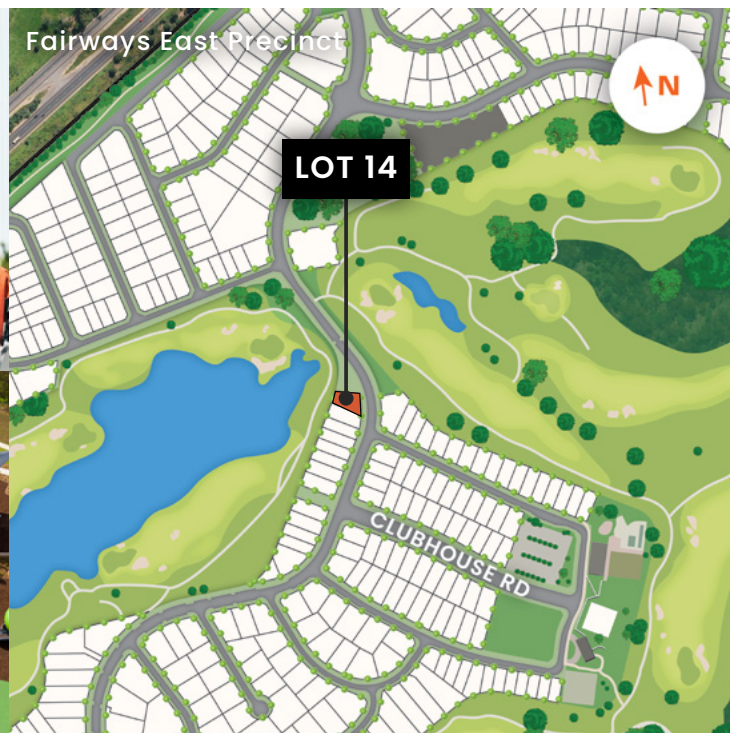
- 6 spacious, light-filled bedrooms, all with built-in storage and a walk-in wardrobe and ensuite featured in the master suite.
- SMEG 90mm stainless steel gas cooktop, 60mm built-in oven, 90mm concealed undermount rangehood, semi-integrated 60mm SMEG dishwasher and SMEG microwave.
- Fully integrated Fisher & Paykel fridge with French doors.
- 8kg Fisher & Paykel front-loaders washing machine and dryer condenser with auto sensing.
- 65" 4K UHD LED Android TVs installed throughout.
- 4 spacious living areas including formal lounge, media room, living and dining area and upstairs rumpus room.
- Mezzo fireplaces in formal lounge and media room.
- Home office and large laundry with external access and built-in storage.
- Senator Pools lap pool with water feature and toughened safety glass panel fencing.
- Covered alfresco area with Eko-deck decking, Vergola louvre operable roof and outdoor shower.

GROUND FLOOR



FIRST FLOOR





- Beautiful views of Razorback Range and surrounding golf course
- Community facilities including tennis courts, swimming pools and gym
 - Future Country Club with dining and entertainment
 - Onsite primary school, childcare and medical centre
- Existing retail includes Woolworths Metro, BWS, Anytime Fitness, Medical Centre, Dentist, Bakery and more
- Future retail to include a full-line Coles Supermarket and 13 speciality stores
- 200 hectares of open space and 120 hectares of protected bushland
- Parks and playgrounds, picturesque waterways, walking and cycling trails
- 15km to Picton Town Centre, 30km to Campbelltown, 42km to Wollongong
 - Convenient connections to M5 and Hume Highway

