

# Simply Beautiful



\*Artist's impression

 4  2  1  2  202.08sqm

## Lot 186 McLellan Street, Wilton NSW WHITEHAVEN MODERN

- Upgraded Gas Cooktop with Wok Burner and 900mm Rangehood.
- Actron dual zone ducted reverse cycle heating/cooling system.
- Latest in hybrid flooring (heat, stain, water and bacteria resistant).
- Built-in mirrored sliding storage.
- LED downlights throughout kitchen & bathroom areas.
- 20mm reconstituted stone benchtops with soft close drawers (in accordance with selected colour scheme).
- Sectional overhead Colorbond garage door with auto-opener (2 hand-held transmitters and 1 wall-mounted transmitter).
- Landscaping to front and rear yards, boundary fencing, concrete driveway, letterbox and clothesline.

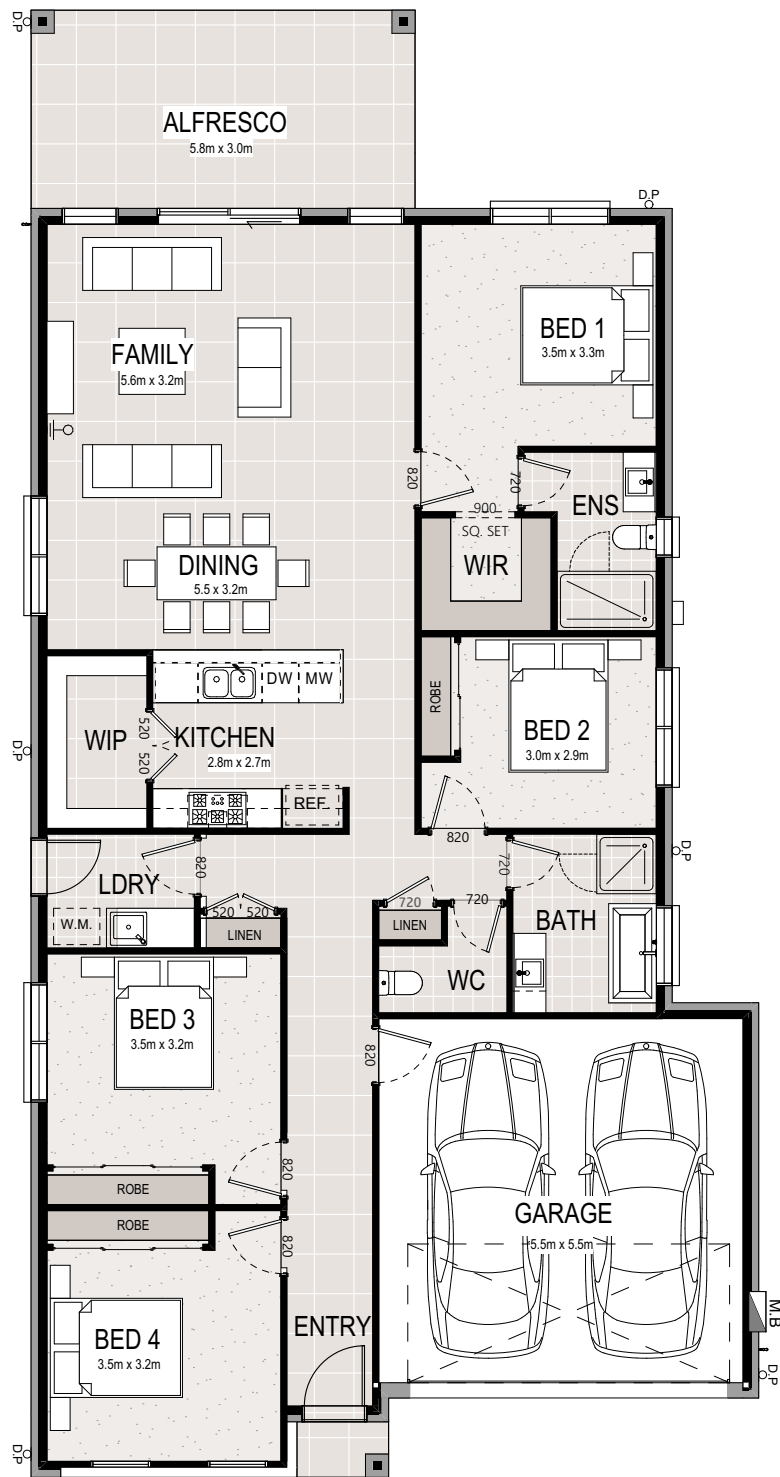
Package	\$1,271,000*
Home	202.08sqm
Land size	450sqm



# BINGARA GORGE

BingaraGorge.com.au • 1800 647 155

METRO



Floor Plan

\*Facade image may depict features not included in the package prices shown such as render, tiling, lighting, roof covering, timber decking and landscaping. Plans are subject to approval by the Principal Developer and Local Authorities. Domaine Homes NSW reserves the right to withdraw or alter this package at any time without notice. Allowance for site costs included, pricing is subject to change without notice. Domaine Homes NSW is not the owner of the land and is not responsible for final site dimensions or registration times. All information given at this time is believed to be correct.

# BINGARA GORGE