

Finishes schedule

Kitchen

- 900mm Westinghouse built-in oven
- 900mm Westinghouse gas cook top
- 900mm Westinghouse canopy rangehood
- 600mm Westinghouse freestanding dishwasher
- 20mm stone bench tops
- Polyurethane kitchen cabinets with soft close doors and cutlery drawer
- 900mm wide island bench including 300mm breakfast bar overhang
- 4 Melamine shelves to walk in pantry (subject to design)
- Chrome or matte black hardware
- Tiled or window splash-back 600mm high (depending on design)
- Microwave, dishwasher, fridge and all cooking appliances provisions

Internals

- 2600mm ceiling height to ground level and 2450mm to first floor
- 90mm cove cornice
- 66mm x 18mm 1/2 splay skirting & architraves
- 2040mm internal door heights (widths as per plans)
- Gainsborough angular lever set
- Matte black accessories
- Matte black metal/rubber door stops to all hinged doors
- Linen to have four (4) white melamine shelves
- Painted finish to skirting, doors & architraves
- Carpeted with a plasterboard nib wall and timber balustrade as per plans

- Two (2) internal gas points
- Actron ducted system
- Round white vents
- Laminate flooring for the hallways, kitchen and ground floor living areas
- Carpet to bedrooms and media rooms

Bathrooms

- Parisi freestanding bath (size as per plan)
- Semi-framless shower screens in matte black or chrome
- White wall faced ceramic toilet with soft close seat
- Forme wall hung vanity (size as per plans) in 4 colour options
- 20mm stone top
- Soft close hinges to cupboards and drawers
- Parisi tapware selection (chrome or matte black)
- Polished edge frameless mirror to suit size of vanity

- 450mm x 450mm floor and wall tiles selected from Beaumont Tiles
- Tiling to the ceiling in all bathrooms, ensuites & WC
- Smart waste with tile insert in chrome or matte black
- Tiled niche to shower and bath
- Tiling to window reveal with aluminium tile angle in chrome or matte black

Laundry

- 20mm stone (to match kitchen)
- Polyurethane laundry cabinets with soft close doors (to match kitchen)
- Stainless steel bowl undermount sink

- Parisi tapware selection (chrome or matte black)
- 450mm x 450mm floor and wall tiles selected from Beaumont Tiles
- Tiling to the ceiling
- Smart waste with tile insert in chrome or matte black
- Hume laundry door with glass insert
- Gainsborough Angular Trilock

Electrical

- Thirty (30) LED down lights
- Two (2) LED fluro battens to garage (subject to design)
- LED high quality oyster lights to remainder of home
- Two (2) external LED twin sensor lights
- Pendant allowance over island bench
- Exhaust, heat & light combination to all bathrooms and ensuites, and exhaust fan to WC subject to design
- Burglar alarm with four (4) sensors and 2 keypads

- Doorbell with intercom and one (1) answering handset and smartphone connectivity

Landscaping

- Site preparation
- Top soil & Buffalo turf to front yard and back yard
- Plants for front yard garden bed
- Mature tree to frontyard
- Pebbles to side of home
- Paved garden bed (edging only)
- Garden mulch
- 45sqm of painted colour seal concrete in coved finish



BingaraGorge.com.au  
1800 647 155

Simply Beautiful

BINGARA GORGE

BINGARA GORGE



BingaraGorge.com.au • 1800 647 155

METRO

Disclaimer: Metro Properties Pty Ltd reserves the right to modify features, specifications, plans, and/or prices without obligation. This floor plan is subject to availability, developers design review panel, site conditions, statutory authority requirements and approvals. All dimensions are an approximate only which are subject to statutory authority requirements and approval. Whilst every effort is made to provide accurate information, floor plan is for illustrative purposes and intended to provide a visual guide only. Refer to individual contracts for final details. Details are correct at time of printing and subject to change without notice or obligation.

METRO

14 Grundy Close, Bingara Gorge, NSW

5 5 3



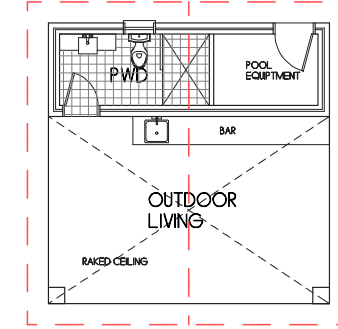
14 Grundy Close, Bingara Gorge NSW

Discover the grandeur of this truly beautiful residence designed to grow with you. Located in the heart of a thriving, family-friendly community, this impressive home is on the doorstep of premium amenities, education, retail and lush parklands.

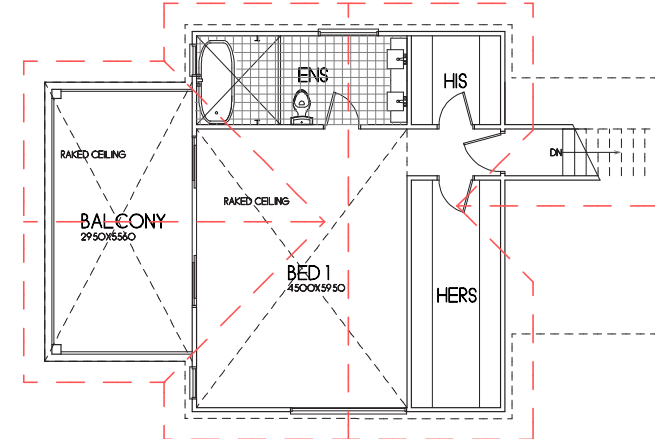
- BASIX Certificate
- NATHERS Certificate
- Three (3) remote garage door controls with wall cradle
- Kitchen design and consultation plans
- 2600mm ceiling height to ground level and 2450mm to first floor
- Parisi tapware selection (chrome or matte black)
- Smoke detectors in accordance with BCA

Home 510.65sqm

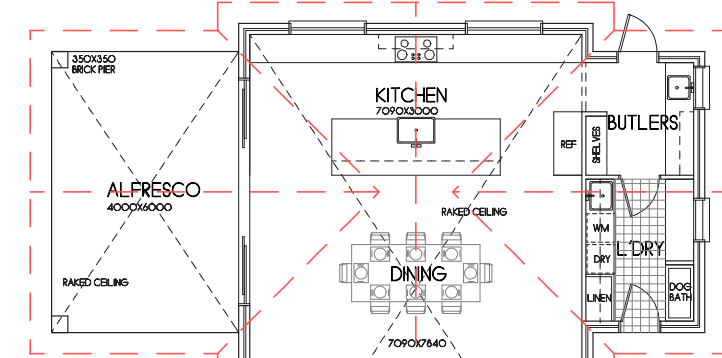
Land size 3086sqm



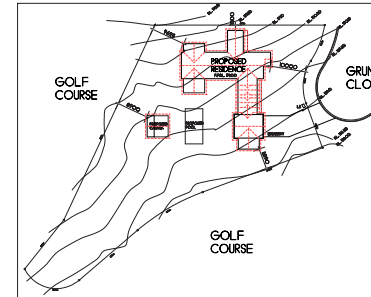
Cabana



First floor



Ground floor



Site plan

