

# BINGARA GORGE



## The benefits of open plan living

Open-plan living is a hallmark of modern home designs in Bingara Gorge, offering a seamless blend of functionality, comfort and style.

According to Nadine Latunin, Interior Design Manager at McDonald Jones Homes, open plan living enhances natural light, creates a sense of spaciousness and encourages social interaction.

"It supports flexible living, allowing homeowners to transition easily between areas while maintaining a cohesive aesthetic. To create a sense of flow within an open plan layout, careful planning is essential."

"Thoughtfully placed sightlines help connect spaces naturally, while a consistent colour palette and complementary materials unify the design. A single flooring material throughout enhances cohesion, while subtle variations in texture or pattern help define different zones," Nadine explains.

Zoning is key to open plan living. Defined areas can be achieved without walls by using rugs, ceiling features such as pendant lights or beams and strategic furniture placement. Large furniture pieces like sectional lounges or dining tables act as natural dividers.



# BINGARA GORGE

"Positioning furniture purposefully establishes structure. A rug under a lounge and coffee table anchors a living space, while a kitchen island separates cooking and dining areas," Nadine added.

Lighting also plays a crucial role in ambiance and zoning. Nadine recommends layered lighting, with ambient and accent lighting defining different spaces. Pendant lights over dining tables, downlights in the kitchen and floor lamps in the living area create structure and enhance the mood. Dimmers add flexibility, allowing homeowners to adjust the lighting.

"A harmonious colour scheme is key to achieving a seamless aesthetic. Neutral tones such as warm whites, soft greys and earthy hues provide continuity, while accent colours add depth. Mixing materials like timber, stone and fabric creates character and balance, with repeated elements ensuring a cohesive look," Nadine advises.



For homes in Bingara Gorge, open plan living helps maximise connection with the rural landscape. Nadine says, "Large windows and sliding or bi-fold doors frame scenic views, while open layouts direct sightlines outdoors to the bushland or golf course. Extending flooring materials onto patios and using a consistent colour palette strengthens the indoor-outdoor connection. Covered alfresco spaces ensure year-round usability."

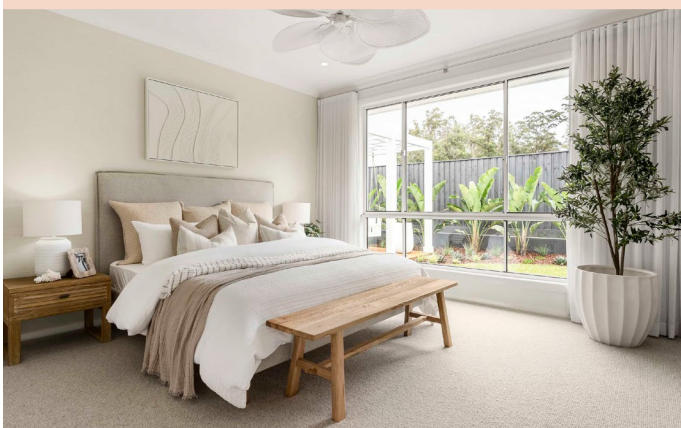
Earthy tones and natural materials like timber, stone and raw concrete complement the surroundings, creating a cohesive aesthetic. Landscaping also enhances liveability with native plants, outdoor fireplaces and pergolas merging indoors with nature.

Bingara Gorge's setting offers homeowners the opportunity to embrace open plan living in a way that integrates with the environment. "Maximising natural light with windows, skylights and sliding doors, selecting materials that reflect the landscape and creating seamless indoor-outdoor transitions all contribute to a home that feels connected to nature," Nadine concluded.

---

**For home buyers looking to build in Bingara Gorge, McDonald Jones Homes offers house and land packages that cater to open plan living. The Porto package is priced from \$998,600. Visit [www.mcdonaldjoneshomes.com.au](http://www.mcdonaldjoneshomes.com.au) to find out more.**

---



While open plan layouts promote connection, privacy can be a challenge. Sliding or pocket doors provide temporary separation, and seating can be positioned strategically. Soft textiles like cushions and throws, layered lighting and warm-toned materials such as timber contribute to a welcoming atmosphere.