

# BINGARA GORGE

*Simply Beautiful*



Images are indicative only and intended to provide a guide of finishes and inclusions.

23 Frew Street, Wilton NSW

**METRO**



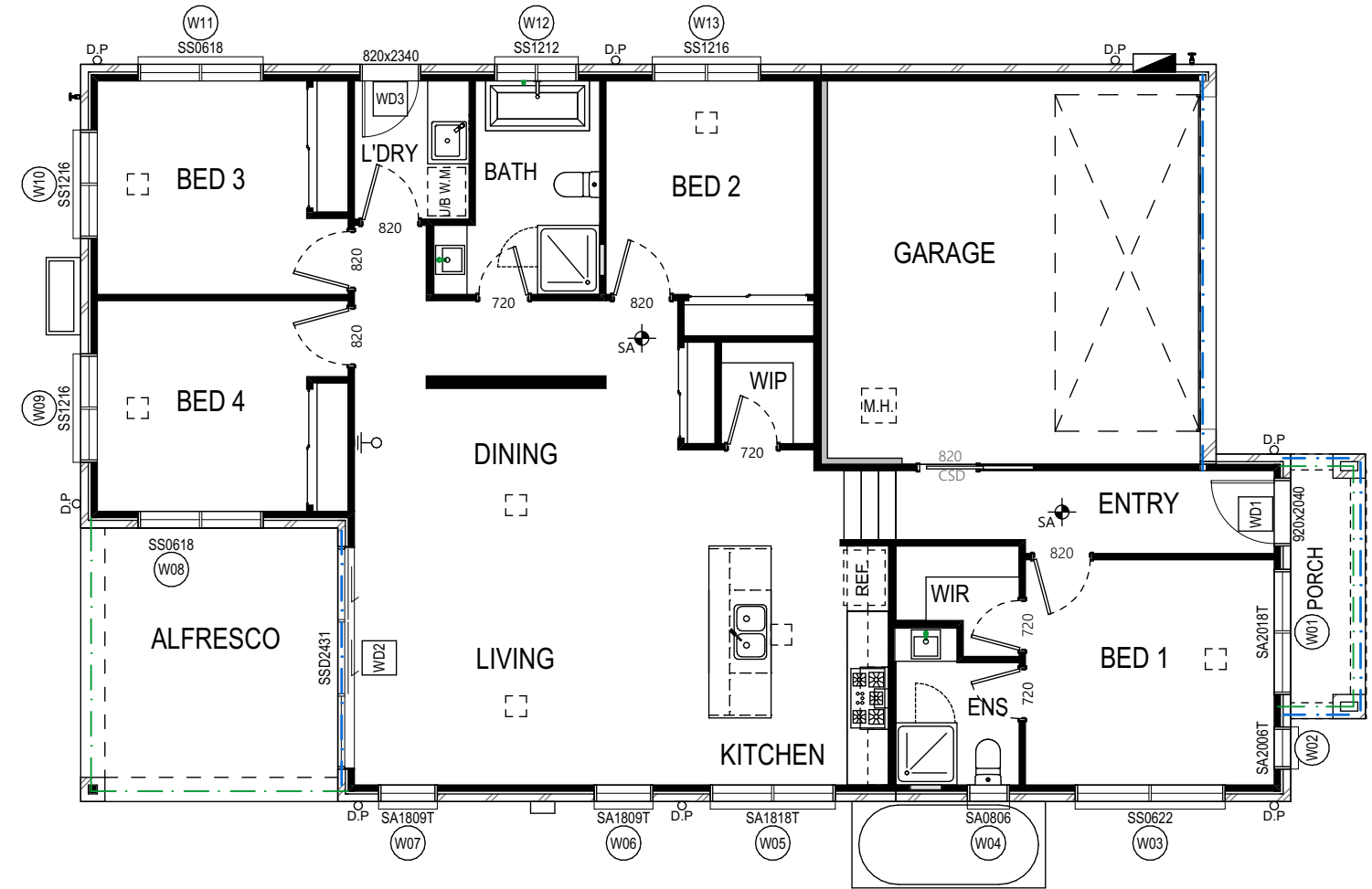


4 2 2

House area: 184.8sqm  
Land area: 530.4sqm

Turnkey inclusions

- Smeg 900mm 5 burner gas cooktop, 900mm Classic Thermoseal built-in oven and 900mm undermount rangehood.
- 40mm CaesarStone benchtops with waterfall edge in kitchen.
- Actron dual-zone ducted reverse-cycle heating/cooling system.
- Engineered oak timber flooring to living, dining and kitchen
- Built-in mirrored sliding wardrobes in bedrooms.
- LED downlights throughout kitchen, pantry and bathroom areas.
- Frameless shower screens to bathroom and ensuite.
- Tiled covered alfresco area.
- Sectional overhead Colorbond garage door with auto-opener (2 handheld transmitters and 1 wall-mounted transmitter).
- Landscaping to front and rear yards, concrete driveway, letterbox and clothesline.



Ground floor plan

Images are indicative only and intended to provide a guide of finishes and inclusions.



Images are indicative only and intended to provide a guide of finishes and inclusions.

Get in touch

1800 647 155

[BingaraGorge.com.au](http://BingaraGorge.com.au)



Creation Homes NSW Pty Ltd reserves the right to modify features, specifications, plans, and/or prices without obligation. This floor plan is subject to availability, developers design review panel, site conditions, statutory authority requirements and approvals. All dimensions are an approximate only which are subject to statutory authority requirements and approval. Whilst every effort is made to provide accurate information, floor plan is for illustrative purposes and intended to provide a visual guide only. Refer to individual contracts for final details. Details are correct at time of printing and subject to change without notice or obligation.

**METRO**