

# Simply Beautiful



\*Façade for artistic impression only

4-5 2.5 2 316.2sqm

## Lot 316 – 2 Dwon Street, Wilton NSW HAYMAN 34 WITH ELOUERA FAÇADE

- \$50,000 off Aspire Homes (already applied)
- 7 star BASIX
- 2600mm ceiling heights to ground floor
- Fully ducted air-conditioning
- Upgrade to 6.6kw solar system
- Choice of colorbond roof in lieu of selected roof tiles
- 20mm edge stone benchtop to kitchen
- Choice of SMEG 900mm freestanding upright cooker or SMEG 900mm electric under bench oven with 900mm gas cooktop
- SMEG 900mm wall-mounted ducted canopy rangehood
- SMEG stainless steel dishwasher
- SMEG 31L microwave with trim kit
- Soft closing drawers to kitchen and vanities
- Cold water point to fridge space
- 20mm edge stone to vanities
- Inline semi frameless shower screen
- Flush finish floor tiles to wet areas
- 20mm edge stone benchtop to laundry
- Everhard classic 45L drop in bowl for laundry sink
- Laminate under bench cupboards to laundry
- Aluminium stacker door to alfresco
- Recessed stacker door track to alfresco
- Ceiling fans to all bedrooms
- Home security alarm system
- And much, much more...

Package	\$1,287,900*
---------	--------------

House size	316.2sqm
------------	----------

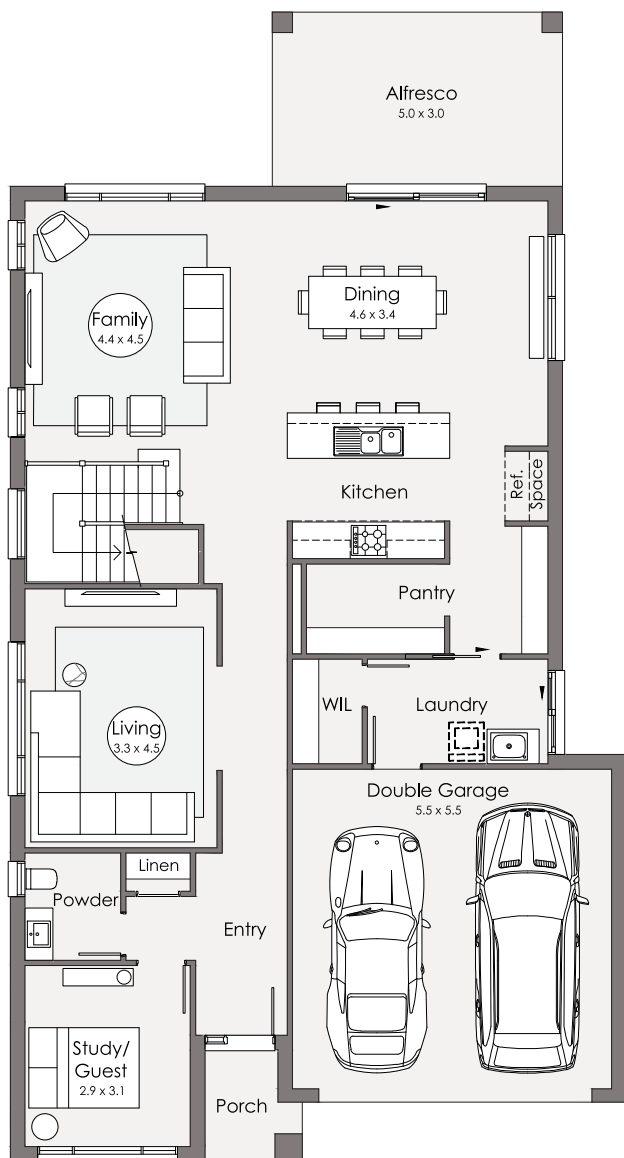
Land size	463.9sqm
-----------	----------

**Clarendon  
Homes**

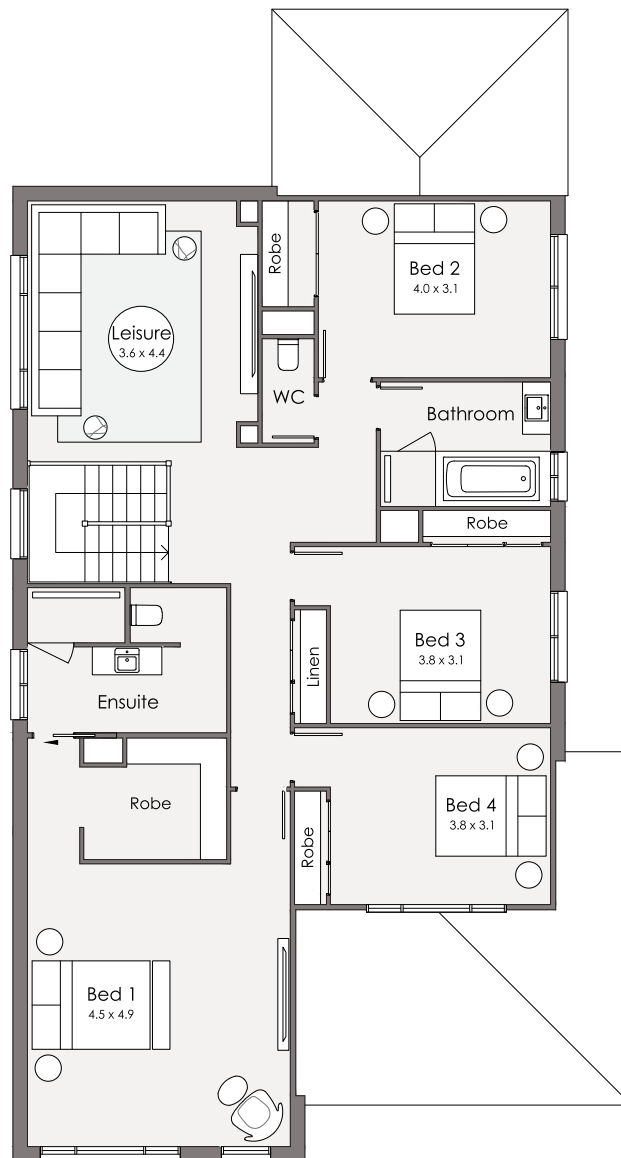
# BINGARA GORGE

BingaraGorge.com.au • 1800 647 155

**METRO**



Ground floor



First floor

Note:  
Please speak to a Sales Consultant to see this house design sited on the block.

\*Terms and conditions apply: Images are provided for illustrative purposes only. Additional charges may apply where designs or facades are modified and/or floorplan options added. Land value included in the package. Clarendon Homes reserves the right to change the price without notice. Only applies to home built in NSW. E&OE. Clarendon Homes (NSW) Pty Ltd. ABN 18 003 892 706 BL 22 98 C.

# BINGARA GORGE

BingaraGorge.com.au • 1800 647 155

**METRO**