

# Simply Beautiful



4 2 2 254.3sqm

## Lot 272 – Carney Street, Wilton NSW SUSSEX 27 DESIGN WITH MONTEPELLIER FAÇADE

- CONNECT site costs and service connections
- Ducted air-conditioning
- 20mm stone tops to kitchen and vanities
- Semi-frameless showerscreens to main and master bathrooms
- Westinghouse 900mm electric cooktop and oven
- Westinghouse S/S rangehood and dishwasher
- Sarking to underside of tiled roof
- 7-Star BASIX\*
- 2,590mm ceiling height to ground floor
- Floor coverings – laminate and carpet
- 25 downlights
- Taubmans 3-coat paint system
- Automatic sectional garage door
- Coloured concrete driveway and path

Package	\$1,254,000*
House	\$534,000
Land	\$720,000
House size	254.3sqm
Land size	450sqm

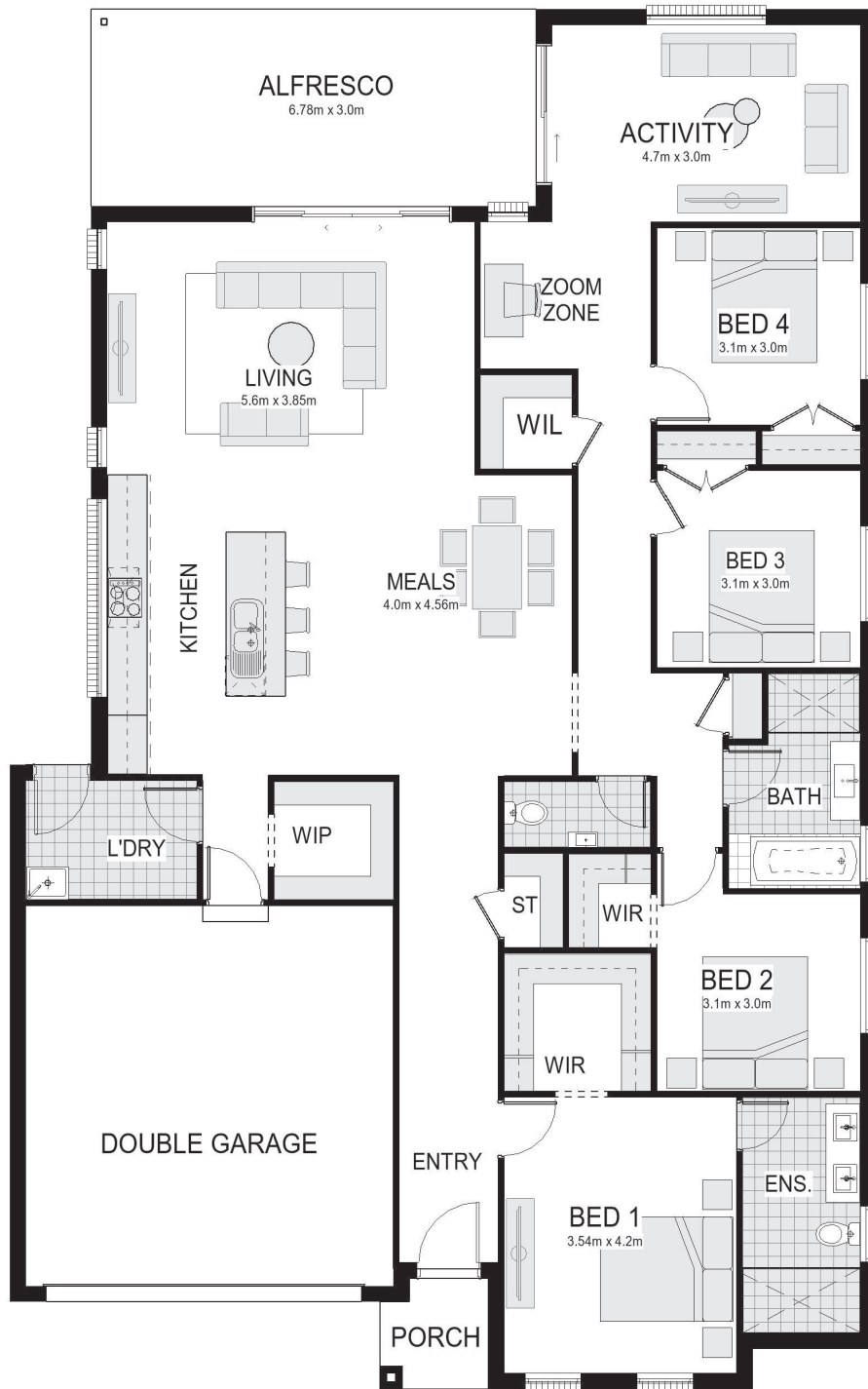


**BELLRIVER**

# BINGARA GORGE

BingaraGorge.com.au • 1800 647 155

**METRO**



## Floor Plan

Note: This is a preliminary siting and is subject to a clear copy of title and approval of the builder. This siting is subject to developer approval, SEPP (state building regulations) and council requirements (if required). All packages are subject to a contour survey, a soil test & a final BASIX assessment. \*Terms & Conditions: The advertised package price is based on a standard home, standard facade, and the developer's initial forecast registration date. Photographs, facades, renders, and other pictures displayed in this brochure are for illustrative purposes only and may show a facade, landscaping, fixtures, fittings or finishes that are not inclusive of this package, and maybe available at an additional cost to the client. The advertised price includes the discount offered in the current promotion. For a full list of Benchmark inclusions, please refer to the Benchmark Inclusions booklet. The package provided is based on Bell River Homes' preliminary/preferred siting and preliminary developer land information currently available. Bell River Homes reserves the right to change specifications, prices & withdraw offers without notice. Variations to land size and location of services, including but not limited to the specifications listed within the Section 88B instrument for the property, may require amendments to the floor plan or house design, which will be at an additional cost. The site start date is subject to third-party factors, including but not limited to land registration, quantity and type of requested client variations, relevant authority approvals, and the acceptance of tender and contract with Bell River Homes. Bell River Homes' Sale terms and conditions apply, and full details of these are available from all Bell River Homes Display Centres. Please contact a Bell River Homes consultant for further information. Bell River Homes Builders Licence Number is 61247C. This package price is based on the April 2026 price list.

# BINGARA GORGE

BingaraGorge.com.au • 1800 647 155

**METRO**